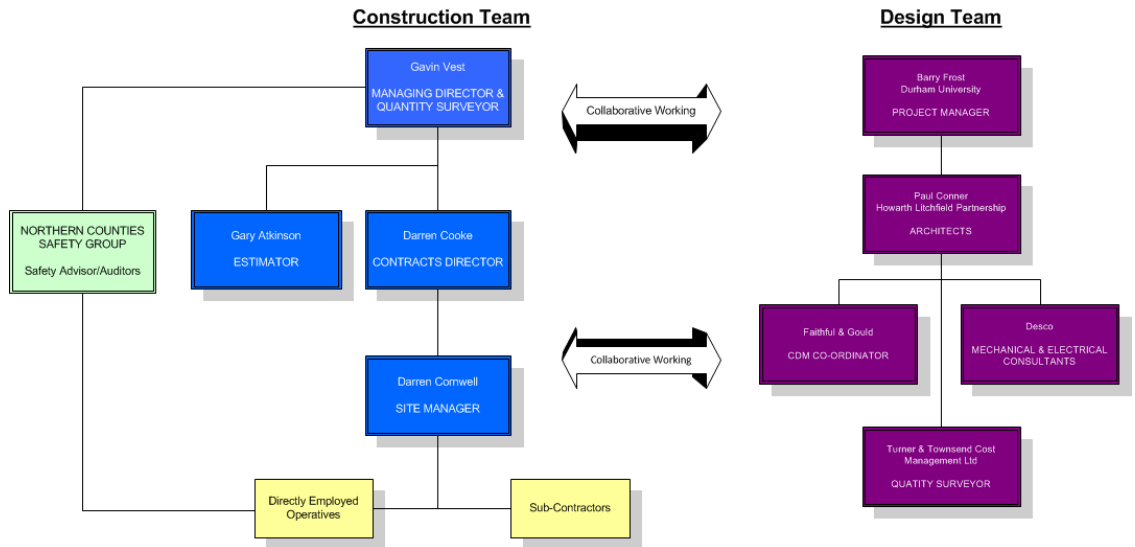


SCHOOL OF MEDICINE, PHARMACY AND HEALTH
QUEENS CAMPUS - STOCKTON ON TEES
DURHAM UNIVERSITY

Client – Durham University – xxxxxxxxxx
 ☰ Estates & Building, Holly Wing, Mountjoy Centre, Stockton Road, Durham, DH1 3LE
 ☎ xxxxxxxxxx ☒ xxxxxxxxxx

Architect – Howarth Litchfield Partnership – xxxxxxxxxx
 ☰ 4 Old Elvet, Durham, DH1 3HL
 ☎ xxxxxxxxxx ☒ xxxxxxxxxx

Completion – September 2013 (5 Months)
 Value - £500,000
 Site Man. - Darren Cornwell



The work involved the remodelling of laboratory facilities in Holliday & Ebsworth Buildings at Queens Campus in Stockton on Tees, to provide state of the art simulation and teaching facilities.



Holliday Building



Ebsworth Building

Phase 1 involved the refurbishment and alterations to the Holliday Building to form a new simulation laboratory where pupils will learn and train to carry out operations on interactive models which can be programmed to simulate a variety of problems which can occur during an operation. The works were carried out during term time with students using the various teaching facilities around the site. The work involved significant electrical, IT, mechanical & AV works.



Simulation Lab

Phase 2 which commenced after phase 1 included the formation of 2 teaching facilities for Pharmacy. The work involved the installation of raised floors to enable the new and future services to be installed without disturbing the floor below which houses the main kitchens and restaurant. Again there was significant electrical, IT & AV works. We also install breakout pods and furniture.





Both phases were completed on schedule and the client/end users were very complimentary about the management of the project which ran smoothly with very little disruption, hence there were very few lessons learnt from this project or between the 2 phases.